



MORGAN ASSOCIATES

ESTATE & LETTINGS AGENCY

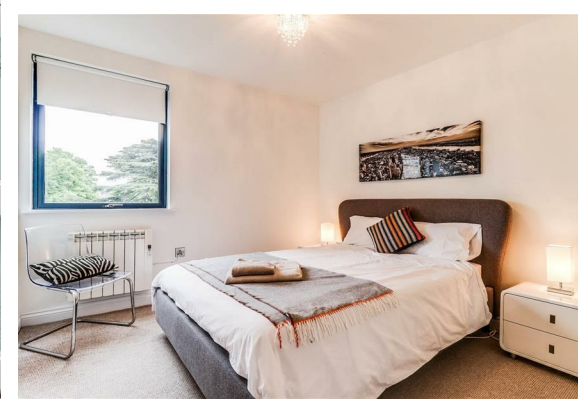
12, Montpellier Terrace Apts,
Cheltenham GL50 1AF
£1,595 PCM



12, Montpellier Terrace Apts,

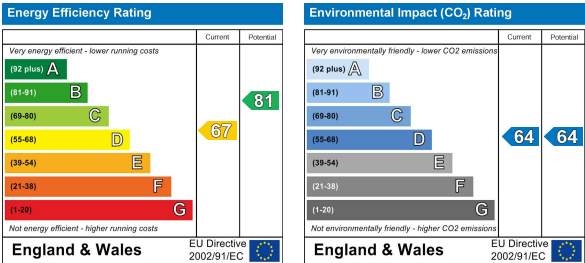
Cheltenham GL50 1AF

Situated in Montpellier, Cheltenham's finest residential district close to good local amenities, this modern two double bedroom, fully furnished third floor apartment is situated within an exclusive contemporary development. Externally there is secure underground allocated parking for one vehicle. Internally the apartment comprises of a bright and spacious open plan sitting / dining room which flows into a high specification fitted kitchen complete with integrated appliances, there are two double bedrooms both of which have wardrobes, an en-suite shower room to the master bedroom and a further bathroom. The apartment is heated throughout by modern electric heating.



Floor Plan

Energy Efficiency Graph



Area Map



Viewing

Please contact us on 01242 514 285 if you wish to arrange a viewing appointment for this property or require further information.

Rotunda Buildings Montpellier Exchange
Cheltenham
Gloucestershire
GL50 1SJ

T. 01242 514 285
E. info@morgan-associates.co.uk
W. www.morgan-associates.co.uk

These particulars, whilst believed to be accurate are set out as a general outline only for guidance and do not constitute any part of an offer or contract. Intending purchasers should not rely on them as statements of representation of fact, but must satisfy themselves by inspection or otherwise as to their accuracy. No person in this firm's employment has the authority to make or give any representation or warranty in respect of the property.

